

# ARCHITECT-ENGINEER QUALIFICATIONS

OMB No.: 9000-0157

Expires: 10/31/2014

PAPERWORK REDUCTION ACT STATEMENT: Public reporting burden for this collection of information is estimated to average 29 hours (25 hours for part 1 and 4 hours for Part 2) per response, including the time for reviewing instructions, searching existing data sources, gathering and maintaining the data needed, and completing and reviewing the collection of information. Send comments regarding this burden estimate or any other aspects of this collection of information, including suggestions for reducing this burden, to U.S. General Services Administration, Regulatory Secretariat (MVCB)/IC 9000-0157, Office of Governmentwide Acquisition Policy, 1800 F Street, NW, Washington, DC 20405.

## PURPOSE

Federal agencies use this form to obtain information from architect-engineer (A-E) firms about their professional qualifications. Federal agencies select firms for A-E contracts on the basis of professional qualifications as required by 40 U.S.C. chapter 11, Selection of Architects Engineers, and Part 36 of the Federal Acquisition Regulation (FAR).

The Selection of Architects and Engineers statute requires the public announcement of requirements for A-E services (with some exceptions provided by other statutes), and the selection of at least three of the most highly qualified firms based on demonstrated competence and professional qualifications according to specific criteria published in the announcement. The Act then requires the negotiation of a contract at a fair and reasonable price starting first with the most highly qualified firm.

The information used to evaluate firms is from this form and other sources, including performance evaluations, any additional data requested by the agency, and interviews with the most highly qualified firms and their references.

## GENERAL INSTRUCTIONS

Part I presents the qualifications for a specific contract.

Part II presents the general qualifications of a firm or a specific branch office of a firm. Part II has two uses:

1. An A-E firm may submit Part II to the appropriate central, regional or local office of each Federal agency to be kept on file. A public announcement is not required for certain contracts, and agencies may use Part II as a basis for selecting at least three of the most highly qualified firms for discussions prior to requesting submission of Part I. Firms are encouraged to update Part II on file with agency offices, as appropriate, according to FAR Part 36. If a firm has branch offices, submit a separate Part II for each branch office seeking work.

2. Prepare a separate Part II for each firm that will be part of the team proposed for a specific contract and submitted with Part I. If a firm has branch offices, submit a separate Part II for each branch office that has a key role on the team.

## INDIVIDUAL AGENCY INSTRUCTIONS

Individual agencies may supplement these instructions. For example, they may limit the number of projects or number of

pages submitted in Part I in response to a public announcement for a particular project. Carefully comply with any agency instructions when preparing and submitting this form. Be as concise as possible and provide only the information requested by the agency.

## DEFINITIONS

**Architect-Engineer Services:** Defined in FAR 2.101.

**Branch Office:** A geographically distinct place of business or subsidiary office of a firm that has a key role on the team.

**Discipline:** Primary technical capabilities of key personnel, as evidenced by academic degree, professional registration, certification, and/or extensive experience.

**Firm:** Defined in FAR 36.102.

**Key Personnel:** Individuals who will have major contract responsibilities and/or provide unusual or unique expertise.

## SPECIFIC INSTRUCTIONS

### Part I - Contract-Specific Qualifications

#### Section A. Contract Information.

1. Title and Location. Enter the title and location of the contract for which this form is being submitted, exactly as shown in the public announcement or agency request.

2. Public Notice Date. Enter the posted date of the agency's notice on the Federal Business Opportunity website (FedBizOpps), other form of public announcement or agency request for this contract.

3. Solicitation or Project Number. Enter the agency's solicitation number and/or project number, if applicable, exactly as shown in the public announcement or agency request for this contract.

#### Section B. Architect-Engineer Point of Contact.

4-8. Name, Title, Name of Firm, Telephone Number, Fax (Facsimile) Number and E-mail (Electronic Mail) Address. Provide information for a representative of the prime contractor or joint venture that the agency can contact for additional information.

---

Section C. Proposed Team.

9-11. Firm Name, Address, and Role in This Contract. Provide the contractual relationship, name, full mailing address, and a brief description of the role of each firm that will be involved in performance of this contract. List the prime contractor or joint venture partners first. If a firm has branch offices, indicate each individual branch office that will have a key role on the team. The named subcontractors and outside associates or consultants must be used, and any change must be approved by the contracting officer. (See FAR Part 52 Clause "Subcontractors and Outside Associates and Consultants (Architect-Engineer Services)".) Attach an additional sheet in the same format as Section C if needed.

Section D. Organizational Chart of Proposed Team.

As an attachment after Section C, present an organizational chart of the proposed team showing the names and roles of all key personnel listed in Section E and the firm they are associated with as listed in Section C.

Section E. Resumes of Key Personnel Proposed for This Contract.

Complete this section for each key person who will participate in this contract. Group by firm, with personnel of the prime contractor or joint venture partner firms first. The following blocks must be completed for each resume:

12. Name. Self-explanatory.

13. Role in This Contract. Self-explanatory.

14. Years Experience. Total years of relevant experience (block 14a), and years of relevant experience with current firm, but not necessarily the same branch office (block 14b).

15. Firm Name and Location. Name, city and state of the firm where the person currently works, which must correspond with one of the firms (or branch office of a firm, if appropriate) listed in Section C.

16. Education. Provide information on the highest relevant academic degree(s) received. Indicate the area(s) of specialization for each degree.

17. Current Professional Registration. Provide information on current relevant professional registration(s) in a State or possession of the United States, Puerto Rico, or the District of Columbia according to FAR Part 36.

18. Other Professional Qualifications. Provide information on any other professional qualifications relating to this contract, such as education, professional registration, publications, organizational memberships, certifications, training, awards, and foreign language capabilities.

19. Relevant Projects. Provide information on up to five projects in which the person had a significant role that demonstrates the person's capability relevant to her/his proposed role in this contract. These projects do not necessarily have to be any of the projects presented in Section F for the project team if the person was not involved in any of those projects or the person worked on other projects that were more relevant than the team projects in Section F. Use the check box provided to indicate if the project was performed with any office of the current firm. If any of the professional services or construction projects are not complete, leave Year Completed blank and indicate the status in Brief Description and Specific Role (block (3)).

Section F. Example Projects Which Best Illustrate Proposed Team's Qualifications for This Contract.

Select projects where multiple team members worked together, if possible, that demonstrate the team's capability to perform work similar to that required for this contract. Complete one Section F for each project. Present ten projects, unless otherwise specified by the agency. Complete the following blocks for each project:

20. Example Project Key Number. Start with "1" for the first project and number consecutively.

21. Title and Location. Title and location of project or contract. For an indefinite delivery contract, the location is the geographic scope of the contract.

22. Year Completed. Enter the year completed of the professional services (such as planning, engineering study, design, or surveying), and/or the year completed of construction, if applicable. If any of the professional services or the construction projects are not complete, leave Year Completed blank and indicate the status in Brief Description of Project and Relevance to This Contract (block 24).

23a. Project Owner. Project owner or user, such as a government agency or installation, an institution, a corporation or private individual.

23b. Point of Contact Name. Provide name of a person associated with the project owner or the organization which contracted for the professional services, who is very familiar with the project and the firm's (or firms') performance.

23c. Point of Contact Telephone Number Self-explanatory.

24. Brief Description of Project and Relevance to This Contract. Indicate scope, size, cost, principal elements and special features of the project. Discuss the relevance of the example project to this contract. Enter any other information requested by the agency for each example project.

25. Firms from Section C Involved with This Project. Indicate which firms (or branch offices, if appropriate) on the project team were involved in the example project, and their roles. List in the same order as Section C.

Section G. Key Personnel Participation in Example Projects.

This matrix is intended to graphically depict which key personnel identified in Section E worked on the example projects listed in Section F. Complete the following blocks (see example below).

26. and 27. Names of Key Personnel and Role in This Contract. List the names of the key personnel and their proposed roles in this contract in the same order as they appear in Section E.

28. Example Projects Listed in Section F. In the column under each project key number (see block 29) and for each key person, place an "X" under the project key number for participation in the same or similar role.

29. Example Projects Key. List the key numbers and titles of the example projects in the same order as they appear in Section F.

Section H. Additional Information.

30. Use this section to provide additional information specifically requested by the agency or to address selection criteria that are not covered by the information provided in Sections A-G.

Section I. Authorized Representative.

31. and 32. Signature of Authorized Representative and Date. An authorized representative of a joint venture or the prime contractor must sign and date the completed form. Signing attests that the information provided is current and factual, and that all firms on the proposed team agree to work on the project. Joint ventures selected for negotiations must make available a statement of participation by a principal of each member of the joint venture.

33. Name and Title. Self-explanatory.

**SAMPLE ENTRIES FOR SECTION G (MATRIX)**

26. NAMES OF KEY PERSONNEL (From Section E, Block 12)	27. ROLE IN THIS CONTRACT (From Section E, Block 13)	28. EXAMPLE PROJECTS LISTED IN SECTION F (Fill in "Example Projects Key" section below first, before completing table. Place "X" under project key number for participation in same or similar role.)									
		1	2	3	4	5	6	7	8	9	10
Jane A. Smith	Chief Architect	X		X							
Joseph B. Williams	Chief Mech. Engineer	X	X	X	X						
Tara C. Donovan	Chief Elec. Engineer	X	X		X						

**29. EXAMPLE PROJECTS KEY**

NO.	TITLE OF EXAMPLE PROJECT (FROM SECTION F)	NO.	TITLE OF EXAMPLE PROJECT (FROM SECTION F)
1	Federal Courthouse, Denver, CO	6	XYZ Corporation Headquarters, Boston, MA
2	Justin J. Wilson Federal Building, Baton Rouge, LA	7	Founder's Museum, Newport RI

---

## Part II - General Qualifications

See the " **General Instructions** " on page 1 for firms with branch offices. Prepare Part II for the specific branch office seeking work if the firm has branch offices.

1. Solicitation Number. If Part II is submitted for a specific contract, insert the agency's solicitation number and/or project number, if applicable, exactly as shown in the public announcement or agency request.

2a-2e. Firm (or Branch Office) Name and Address. Self-explanatory.

3. Year Established. Enter the year the firm (or branch office, if appropriate) was established under the current name.

4. DUNS Number. Insert the Data Universal Numbering System number issued by Dun and Bradstreet Information Services. Firms must have a DUNS number. See FAR Part 4.6.

### 5. Ownership.

a. Type. Enter the type of ownership or legal structure of the firm (sole proprietor, partnership, corporation, joint venture, etc.).

b. Small Business Status. Refer to the North American Industry Classification System (NAICS) code in the public announcement, and indicate if the firm is a small business according to the current size standard for that NAICS code (for example, Engineering Services (part of NAICS 541330), Architectural Services (NAICS 541310), Surveying and Mapping Services (NAICS 541370)). The small business categories and the internet website for the NAICS codes appear in FAR Part 19. Contact the requesting agency for any questions. Contact your local U.S. Small Business Administration office for any questions regarding Business Status.

6a-6c. Point of Contact. Provide this information for a representative of the firm that the agency can contact for additional information. The representative must be empowered to speak on contractual and policy matters.

7. Name of Firm. Enter the name of the firm if Part II is prepared for a branch office.

8a-8c. Former Firm Names. Indicate any other previous names for the firm (or branch office) during the last six years. Insert the year that this corporate name change was

effective and the associated DUNS Number. This information is used to review past performance on Federal contracts.

9. Employees by Discipline. Use the relevant disciplines and associated function codes shown at the end of these instructions and list in the same numerical order. After the listed disciplines, write in any additional disciplines and leave the function code blank. List no more than 20 disciplines. Group remaining employees under "Other Employees" in column b. Each person can be counted only once according to his/her primary function. If Part II is prepared for a firm (including all branch offices), enter the number of employees by disciplines in column c(1). If Part II is prepared for a branch office, enter the number of employees by discipline in column c(2) and for the firm in column c(1).

10. Profile of Firm's Experience and Annual Average Revenue for Last 5 Years. Complete this block for the firm or branch office for which this Part II is prepared. Enter the experience categories which most accurately reflect the firm's technical capabilities and project experience. Use the relevant experience categories and associated profile codes shown at the end of these instructions, and list in the same numerical order. After the listed experience categories, write in any unlisted relevant project experience categories and leave the profile codes blank. For each type of experience, enter the appropriate revenue index number to reflect the professional services revenues received annually (averaged over the last 5 years) by the firm or branch office for performing that type of work. A particular project may be identified with one experience category or it may be broken into components, as best reflects the capabilities and types of work performed by the firm. However, do not double count the revenues received on a particular project.

11. Annual Average Professional Services Revenues of Firm for Last 3 Years. Complete this block for the firm or branch office for which this Part II is prepared. Enter the appropriate revenue index numbers to reflect the professional services revenues received annually (averaged over the last 3 years) by the firm or branch office. Indicate Federal work (performed directly for the Federal Government, either as the prime contractor or subcontractor), non-Federal work (all other domestic and foreign work, including Federally-assisted projects), and the total. If the firm has been in existence for less than 3 years, see the definition for "Annual Receipts" under FAR 19.101.

12. Authorized Representative. An authorized representative of the firm or branch office must sign and date the completed form. Signing attests that the information provided is current and factual. Provide the name and title of the authorized representative who signed the form.

---

List of Disciplines (Function Codes)

---

<b>Code</b>	<b>Description</b>	<b>Code</b>	<b>Description</b>
01	Acoustical Engineer	32	Hydraulic Engineer
02	Administrative	33	Hydrographic Surveyor
03	Aerial Photographer	34	Hydrologist
04	Aeronautical Engineer	35	Industrial Engineer
05	Archeologist	36	Industrial Hygienist
06	Architect	37	Interior Designer
07	Biologist	38	Land Surveyor
08	CADD Technician	39	Landscape Architect
09	Cartographer	40	Materials Engineer
10	Chemical Engineer	41	Materials Handling Engineer
11	Chemist	42	Mechanical Engineer
12	Civil Engineer	43	Mining Engineer
13	Communications Engineer	44	Oceanographer
14	Computer Programmer	45	Photo Interpreter
15	Construction Inspector	46	Photogrammetrist
16	Construction Manager	47	Planner: Urban/Regional
17	Corrosion Engineer	48	Project Manager
18	Cost Engineer/Estimator	49	Remote Sensing Specialist
19	Ecologist	50	Risk Assessor
20	Economist	51	Safety/Occupational Health Engineer
21	Electrical Engineer	52	Sanitary Engineer
22	Electronics Engineer	53	Scheduler
23	Environmental Engineer	54	Security Specialist
24	Environmental Scientist	55	Soils Engineer
25	Fire Protection Engineer	56	Specifications Writer
26	Forensic Engineer	57	Structural Engineer
27	Foundation/Geotechnical Engineer	58	Technician/Analyst
28	Geodetic Surveyor	59	Toxicologist
29	Geographic Information System Specialist	60	Transportation Engineer
30	Geologist	61	Value Engineer
31	Health Facility Planner	62	Water Resources Engineer

---

List of Experience Categories (Profile Codes)

---

Code	Description	Code	Description
A01	Acoustics, Noise Abatement	E01	Ecological & Archeological Investigations
A02	Aerial Photography; Airborne Data and Imagery Collection and Analysis	E02	Educational Facilities; Classrooms
A03	Agricultural Development; Grain Storage; Farm Mechanization	E03	Electrical Studies and Design
A04	Air Pollution Control	E04	Electronics
A05	Airports; Navaids; Airport Lighting; Aircraft Fueling	E05	Elevators; Escalators; People-Movers
A06	Airports; Terminals and Hangars; Freight Handling	E06	Embassies and Chanceries
A07	Arctic Facilities	E07	Energy Conservation; New Energy Sources
A08	Animal Facilities	E08	Engineering Economics
A09	Anti-Terrorism/Force Protection	E09	Environmental Impact Studies, Assessments or Statements
A10	Asbestos Abatement	E10	Environmental and Natural Resource Mapping
A11	Auditoriums & Theaters	E11	Environmental Planning
A12	Automation; Controls; Instrumentation	E12	Environmental Remediation
B01	Barracks; Dormitories	E13	Environmental Testing and Analysis
B02	Bridges	F01	Fallout Shelters; Blast-Resistant Design
C01	Cartography	F02	Field Houses; Gyms; Stadiums
C02	Cemeteries ( <i>Planning &amp; Relocation</i> )	F03	Fire Protection
C03	Charting: Nautical and Aeronautical	F04	Fisheries; Fish ladders
C04	Chemical Processing & Storage	F05	Forensic Engineering
C05	Child Care/Development Facilities	F06	Forestry & Forest products
C06	Churches; Chapels	G01	Garages; Vehicle Maintenance Facilities; Parking Decks
C07	Coastal Engineering	G02	Gas Systems (Propane; Natural, Etc.)
C08	Codes; Standards; Ordinances	G03	Geodetic Surveying: Ground and Air-borne
C09	Cold Storage; Refrigeration and Fast Freeze	G04	Geographic Information System Services: Development, Analysis, and Data Collection
C10	Commercial Building ( <i>low rise</i> ) ; Shopping Centers	G05	Geospatial Data Conversion: Scanning, Digitizing, Compilation, Attributing, Scribing, Drafting
C11	Community Facilities	G06	Graphic Design
C12	Communications Systems; TV; Microwave	H01	Harbors; Jetties; Piers, Ship Terminal Facilities
C13	Computer Facilities; Computer Service	H02	Hazardous Materials Handling and Storage
C14	Conservation and Resource Management	H03	Hazardous, Toxic, Radioactive Waste Remediation
C15	Construction Management	H04	Heating; Ventilating; Air Conditioning
C16	Construction Surveying	H05	Health Systems Planning
C17	Corrosion Control; Cathodic Protection; Electrolysis	H06	Highrise; Air-Rights-Type Buildings
C18	Cost Estimating; Cost Engineering and Analysis; Parametric Costing; Forecasting	H07	Highways; Streets; Airfield Paving; Parking Lots
C19	Cryogenic Facilities	H08	Historical Preservation
D01	Dams ( <i>Concrete; Arch</i> )	H09	Hospital & Medical Facilities
D02	Dams ( <i>Earth; Rock</i> ); Dikes; Levees	H10	Hotels; Motels
D03	Desalinization ( <i>Process &amp; Facilities</i> )	H11	Housing ( <i>Residential, Multi-Family; Apartments; Condominiums</i> )
D04	Design-Build - Preparation of Requests for Proposals	H12	Hydraulics & Pneumatics
D05	Digital Elevation and Terrain Model Development	H13	Hydrographic Surveying
D06	Digital Orthophotography		
D07	Dining Halls; Clubs; Restaurants		
D08	Dredging Studies and Design		

---

List of Experience Categories (Profile Codes)

---

Code	Description	Code	Description
I01	Industrial Buildings; Manufacturing Plants	P09	Product, Machine Equipment Design
I02	Industrial Processes; Quality Control	P10	Pneumatic Structures, Air-Support Buildings
I03	Industrial Waste Treatment	P11	Postal Facilities
I04	Intelligent Transportation Systems	P12	Power Generation, Transmission, Distribution
I05	Interior Design; Space Planning	P13	Public Safety Facilities
I06	Irrigation; Drainage	R01	Radar; Sonar; Radio & Radar Telescopes
J01	Judicial and Courtroom Facilities	R02	Radio Frequency Systems & Shieldings
L01	Laboratories; Medical Research Facilities	R03	Railroad; Rapid Transit
L02	Land Surveying	R04	Recreation Facilities (Parks, Marinas, Etc.)
L03	Landscape Architecture	R05	Refrigeration Plants/Systems
L04	Libraries; Museums; Galleries	R06	Rehabilitation (Buildings; Structures; Facilities)
L05	Lighting (Interior; Display; Theater, Etc.)	R07	Remote Sensing
L06	Lighting (Exteriors; Streets; Memorials; Athletic Fields, Etc.)	R08	Research Facilities
M01	Mapping Location/Addressing Systems	R09	Resources Recovery; Recycling
M02	Materials Handling Systems; Conveyors; Sorters	R10	Risk Analysis
M03	Metallurgy	R11	Rivers; Canals; Waterways; Flood Control
M04	Microclimatology; Tropical Engineering	R12	Roofing
M05	Military Design Standards	S01	Safety Engineering; Accident Studies; OSHA Studies
M06	Mining & Mineralogy	S02	Security Systems; Intruder & Smoke Detection
M07	Missile Facilities (Silos; Fuels; Transport)	S03	Seismic Designs & Studies
M08	Modular Systems Design; Pre-Fabricated Structures or Components	S04	Sewage Collection, Treatment and Disposal
N01	Naval Architecture; Off-Shore Platforms	S05	Soils & Geologic Studies; Foundations
N02	Navigation Structures; Locks	S06	Solar Energy Utilization
N03	Nuclear Facilities; Nuclear Shielding	S07	Solid Wastes; Incineration; Landfill
O01	Office Buildings; Industrial Parks	S08	Special Environments; Clean Rooms, Etc.
O02	Oceanographic Engineering	S09	Structural Design; Special Structures
O03	Ordnance; Munitions; Special Weapons	S10	Surveying; Platting; Mapping; Flood Plain Studies
P01	Petroleum Exploration; Refining	S11	Sustainable Design
P02	Petroleum and Fuel (Storage and Distribution)	S12	Swimming Pools
P03	Photogrammetry	S13	Storm Water Handling & Facilities
P04	Pipelines (Cross-Country - Liquid & Gas)	T01	Telephone Systems ( <i>Rural; Mobile; Intercom, Etc.</i> )
P05	Planning (Community, Regional, Areawide and State)	T02	Testing & Inspection Services
P06	Planning (Site, Installation, and Project)	T03	Traffic & Transportation Engineering
P07	Plumbing & Piping Design	T04	Topographic Surveying and Mapping
P08	Prisons & Correctional Facilities	T05	Towers ( <i>Self-Supporting &amp; Guyed Systems</i> )
		T06	Tunnels & Subways

---

List of Experience Categories (Profile Codes)

---

<b>Code</b>	<b>Description</b>
U01	Unexploded Ordnance Remediation
U02	Urban Renewals; Community Development
U03	Utilities (Gas and Steam)
V01	Value Analysis; Life-Cycle Costing
W01	Warehouses & Depots
W02	Water Resources; Hydrology; Ground Water
W03	Water Supply; Treatment and Distribution
W04	Wind Tunnels; Research/Testing Facilities Design
Z01	Zoning; Land Use Studies



# ARCHITECT - ENGINEER QUALIFICATIONS

## PART I - CONTRACT-SPECIFIC QUALIFICATIONS

### A. CONTRACT INFORMATION

1. TITLE AND LOCATION *(City and State)*

Light Industrial Projects, Sacramento District, US Army Corps of Engineers

2. PUBLIC NOTICE DATE

10/10/2012

3. SOLICITATION OR PROJECT NUMBER

### B. ARCHITECT-ENGINEER POINT OF CONTACT

4. NAME AND TITLE

Arthur Carlson

5. NAME OF FIRM

DeMille Architects

6. TELEPHONE NUMBER

714-555-1234

7. FAX NUMBER

714-555-1233

8. E-MAIL ADDRESS

arthur.carlson@demille.com

### C. PROPOSED TEAM

*(Complete this section for the prime contractor and all key subcontractors.)*

(Check)				9. FIRM NAME	10. ADDRESS	11. ROLE IN THIS CONTRACT
	PRIME	J-V	PARTNER SUBCON- TRACTOR			
a.	✓			DeMille Architects  <input type="checkbox"/> CHECK IF BRANCH OFFICE	1960 Main St Suite 555 Walnut Creek, CA 94596	Principal Architects
b.				<input type="checkbox"/> CHECK IF BRANCH OFFICE		
c.				<input type="checkbox"/> CHECK IF BRANCH OFFICE		
d.				<input type="checkbox"/> CHECK IF BRANCH OFFICE		
e.				<input type="checkbox"/> CHECK IF BRANCH OFFICE		
f.				<input type="checkbox"/> CHECK IF BRANCH OFFICE		

### D. ORGANIZATIONAL CHART OF PROPOSED TEAM

*(Attached)*

**E. RESUMES OF KEY PERSONNEL PROPOSED FOR THIS CONTRACT**

*(Complete one Section E for each key person.)*

12. NAME  Arthur Carlson	13. ROLE IN THIS CONTRACT  Principal Architect	14. YEARS EXPERIENCE	
		a. TOTAL 23	b. WITH CURRENT FIRM 4
15. FIRM NAME AND LOCATION <i>(City and State)</i> DeMille Architects, Walnut Creek, CA			
16. EDUCATION <i>(DEGREE AND SPECIALIZATION)</i> BS/1989 Electrical Engineering		17. CURRENT PROFESSIONAL REGISTRATION <i>(STATE AND DISCIPLINE)</i> PE, CA; Electrical Engineer	
18. OTHER PROFESSIONAL QUALIFICATIONS <i>(Publications, Organizations, Training, Awards, etc.)</i>			

**19. RELEVANT PROJECTS**

(1) TITLE AND LOCATION <i>(City and State)</i>	(2) YEAR COMPLETED	
	PROFESSIONAL SERVICES	CONSTRUCTION <i>(If applicable)</i>
Helicopter Maintenance Hangar and Shops, L.A. Sheriff's Department Los Angeles, CA	2011	
a. (3) BRIEF DESCRIPTION <i>(Brief scope, size, cost, etc.)</i> AND SPECIFIC ROLE <input checked="" type="checkbox"/> Check if project performed with current firm Project Principal for the facility programming of the sheriff's department headquarters and helicopter maintenance facility that accommodates 14 helicopters and two fixed-wing aircraft.		
Engineering Laboratories and Offices, Lockheed ADC Palmdale, CA	2011	
b. (3) BRIEF DESCRIPTION <i>(Brief scope, size, cost, etc.)</i> AND SPECIFIC ROLE <input checked="" type="checkbox"/> Check if project performed with current firm Project Engineer for a 225,000 sf engineering building which included electronics laboratories, offices and administration, and a data and communications center.		
Addition and Alteration of Various Facilities Vandenberg, AFB CA	2010	
c. (3) BRIEF DESCRIPTION <i>(Brief scope, size, cost, etc.)</i> AND SPECIFIC ROLE <input checked="" type="checkbox"/> Check if project performed with current firm Project principal for additions and alterations to Missile Maintenance Facilities, Missile Training Aids Facility, Missile and Satellite Tracking Station, Missile Launch Pads and Launch Control Towers.		
Modification and Repair to Aircraft Maintenance Hangars, MCAS EI Toro, CA	2009	
d. (3) BRIEF DESCRIPTION <i>(Brief scope, size, cost, etc.)</i> AND SPECIFIC ROLE <input checked="" type="checkbox"/> Check if project performed with current firm Project Manager for the modification and repairs to hangars for MAG 11, MAG 13, and MAG 46.		
e. (3) BRIEF DESCRIPTION <i>(Brief scope, size, cost, etc.)</i> AND SPECIFIC ROLE <input type="checkbox"/> Check if project performed with current firm		

**E. RESUMES OF KEY PERSONNEL PROPOSED FOR THIS CONTRACT**

*(Complete one Section E for each key person.)*

12. NAME  Jacob Esterly, NCARB	13. ROLE IN THIS CONTRACT  Project Manager	14. YEARS EXPERIENCE	
		a. TOTAL  16	b. WITH CURRENT FIRM  4
15. FIRM NAME AND LOCATION <i>(City and State)</i> DeMille Architects, Walnut Creek, CA			
16. EDUCATION <i>(DEGREE AND SPECIALIZATION)</i> BA/1993/Architecture MA/1995/Architecture		17. CURRENT PROFESSIONAL REGISTRATION <i>(STATE AND DISCIPLINE)</i> 1996/Architecture 2000/NCARB Certified	
18. OTHER PROFESSIONAL QUALIFICATIONS <i>(Publications, Organizations, Training, Awards, etc.)</i>			

**19. RELEVANT PROJECTS**

(1) TITLE AND LOCATION <i>(City and State)</i>	(2) YEAR COMPLETED	
	PROFESSIONAL SERVICES	CONSTRUCTION <i>(If applicable)</i>
Tactical Vehicle Maintenance Facility, 21 Area MCB Camp Pendleton, CA	2011	2012
a. (3) BRIEF DESCRIPTION <i>(Brief scope, size, cost, etc.)</i> AND SPECIFIC ROLE <input checked="" type="checkbox"/> Check if project performed with current firm Project Manager for an 18,800 sf Motor Transport Shop, a 6,100 sf Communications/Electronics Shop and a 26,000 sf store house. The Motor Shop includes 5 work bays including one bay used to service tracked vehicles.		
Tactical Vehicle Maintenance Facility, 32 Area MCB Camp Pendleton, CA.	2012	
b. (3) BRIEF DESCRIPTION <i>(Brief scope, size, cost, etc.)</i> AND SPECIFIC ROLE <input checked="" type="checkbox"/> Check if project performed with current firm Project Manager for a 4,800 sf maintenance facility for classified vehicles and a 1,400 sf classroom/simulation facility.		
Southern Pacific Maintenance Facilities Relocation Oakland, CA	2010	
c. (3) BRIEF DESCRIPTION <i>(Brief scope, size, cost, etc.)</i> AND SPECIFIC ROLE <input checked="" type="checkbox"/> Check if project performed with current firm Project Manager for the master planning, programming and design of numerous new and remodeled maintenance facilities associated with the major reconfiguration of Souther Pacific's Oakland rail yard.		
Way Equipment/Component Maintenance & Repair Facility, Southern Pacific Rio Grande Railroad, Denver, Co.	2012	
d. (3) BRIEF DESCRIPTION <i>(Brief scope, size, cost, etc.)</i> AND SPECIFIC ROLE <input checked="" type="checkbox"/> Check if project performed with current firm Project Manager for a 65,000 sf vehicle and component repair facility.		
e. (3) BRIEF DESCRIPTION <i>(Brief scope, size, cost, etc.)</i> AND SPECIFIC ROLE <input type="checkbox"/> Check if project performed with current firm		

**E. RESUMES OF KEY PERSONNEL PROPOSED FOR THIS CONTRACT**

*(Complete one Section E for each key person.)*

12. NAME  George Thompson	13. ROLE IN THIS CONTRACT  Structural	14. YEARS EXPERIENCE	
		a. TOTAL  16	b. WITH CURRENT FIRM  4
15. FIRM NAME AND LOCATION <i>(City and State)</i> DeMille Architects, Walnut Creek, CA			
16. EDUCATION <i>(DEGREE AND SPECIALIZATION)</i> BS/1996/Structural Engineering		17. CURRENT PROFESSIONAL REGISTRATION <i>(STATE AND DISCIPLINE)</i> PE, Structural, 1998, California	
18. OTHER PROFESSIONAL QUALIFICATIONS <i>(Publications, Organizations, Training, Awards, etc.)</i>			

**19. RELEVANT PROJECTS**

(1) TITLE AND LOCATION <i>(City and State)</i> Tactical Vehicle Maintenance Facility, 21 Area MCB Camp Pendleton, CA	(2) YEAR COMPLETED	
	PROFESSIONAL SERVICES 2011	CONSTRUCTION <i>(If applicable)</i> 2012
a. (3) BRIEF DESCRIPTION <i>(Brief scope, size, cost, etc.)</i> AND SPECIFIC ROLE Project Structural Engineer for an 18,800 sf Motor Transport Shop, a 6,100 sf Communications/Electronics Shop and a 26,000 sf store house. The Motor Shop includes 5 work bays including one bay used to service tracked vehicles.		
<input checked="" type="checkbox"/> Check if project performed with current firm		
(1) TITLE AND LOCATION <i>(City and State)</i> Tactical Vehicle Maintenance Facility, 32 Area MCB Camp Pendleton, CA	(2) YEAR COMPLETED	
	PROFESSIONAL SERVICES 2012	CONSTRUCTION <i>(If applicable)</i>
b. (3) BRIEF DESCRIPTION <i>(Brief scope, size, cost, etc.)</i> AND SPECIFIC ROLE Project Structural Engineer for a 4,800 sf maintenance facility for classified vehicles and a 1,400 sf classroom/simulation facility.		
<input checked="" type="checkbox"/> Check if project performed with current firm		
(1) TITLE AND LOCATION <i>(City and State)</i> Southern Pacific Maintenance Facilities Relocation Oakland, CA	(2) YEAR COMPLETED	
	PROFESSIONAL SERVICES 2010	CONSTRUCTION <i>(If applicable)</i>
c. (3) BRIEF DESCRIPTION <i>(Brief scope, size, cost, etc.)</i> AND SPECIFIC ROLE Project Structural Engineer for the master planning, programming and design of numerous new and remodeled maintenance facilities associated with the major reconfiguration of Souther Pacific's Oakland rail yard.		
<input checked="" type="checkbox"/> Check if project performed with current firm		
(1) TITLE AND LOCATION <i>(City and State)</i> Way Equipment/Component Maintenance & Repair Facility, Southern Pacific Rio Grande Railroad, Denver, CO	(2) YEAR COMPLETED	
	PROFESSIONAL SERVICES 2012	CONSTRUCTION <i>(If applicable)</i>
d. (3) BRIEF DESCRIPTION <i>(Brief scope, size, cost, etc.)</i> AND SPECIFIC ROLE Project Structural Engineer for a 65,000 sf vehicle and component repair facility.		
<input checked="" type="checkbox"/> Check if project performed with current firm		
(1) TITLE AND LOCATION <i>(City and State)</i>	(2) YEAR COMPLETED	
	PROFESSIONAL SERVICES	CONSTRUCTION <i>(If applicable)</i>
e. (3) BRIEF DESCRIPTION <i>(Brief scope, size, cost, etc.)</i> AND SPECIFIC ROLE		
<input type="checkbox"/> Check if project performed with current firm		

**E. RESUMES OF KEY PERSONNEL PROPOSED FOR THIS CONTRACT**

*(Complete one Section E for each key person.)*

12. NAME  Toby Eastwick	13. ROLE IN THIS CONTRACT  Mechanical	14. YEARS EXPERIENCE	
		a. TOTAL  16	b. WITH CURRENT FIRM  4
15. FIRM NAME AND LOCATION <i>(City and State)</i> DeMille Architects, Walnut Creek, CA			
16. EDUCATION <i>(DEGREE AND SPECIALIZATION)</i> BS/1996/Mechanical Engineering MS/1998/Mechanical Engineering		17. CURRENT PROFESSIONAL REGISTRATION <i>(STATE AND DISCIPLINE)</i> PE, Mechanical, 1998, California	
18. OTHER PROFESSIONAL QUALIFICATIONS <i>(Publications, Organizations, Training, Awards, etc.)</i>			

**19. RELEVANT PROJECTS**

(1) TITLE AND LOCATION <i>(City and State)</i> Tactical Vehicle Maintenance Facility, 21 Area MCB Camp Pendleton, CA	(2) YEAR COMPLETED	
	PROFESSIONAL SERVICES 2011	CONSTRUCTION <i>(If applicable)</i> 2012
a. (3) BRIEF DESCRIPTION <i>(Brief scope, size, cost, etc.)</i> AND SPECIFIC ROLE Project Structural Engineer for an 18,800 sf Motor Transport Shop, a 6,100 sf Communications/Electronics Shop and a 26,000 sf store house. The Motor Shop includes 5 work bays including one bay used to service tracked vehicles.		
<input checked="" type="checkbox"/> Check if project performed with current firm		
(1) TITLE AND LOCATION <i>(City and State)</i> Tactical Vehicle Maintenance Facility, 32 Area MCB Camp Pendleton, CA	(2) YEAR COMPLETED	
	PROFESSIONAL SERVICES 2012	CONSTRUCTION <i>(If applicable)</i>
b. (3) BRIEF DESCRIPTION <i>(Brief scope, size, cost, etc.)</i> AND SPECIFIC ROLE Project Structural Engineer for a 4,800 sf maintenance facility for classified vehicles and a 1,400 sf classroom/simulation facility.		
<input checked="" type="checkbox"/> Check if project performed with current firm		
(1) TITLE AND LOCATION <i>(City and State)</i> Southern Pacific Maintenance Facilities Relocation Oakland, CA	(2) YEAR COMPLETED	
	PROFESSIONAL SERVICES 2010	CONSTRUCTION <i>(If applicable)</i>
c. (3) BRIEF DESCRIPTION <i>(Brief scope, size, cost, etc.)</i> AND SPECIFIC ROLE Project Structural Engineer for the master planning, programming and design of numerous new and remodeled maintenance facilities associated with the major reconfiguration of Souther Pacific's Oakland rail yard.		
<input checked="" type="checkbox"/> Check if project performed with current firm		
(1) TITLE AND LOCATION <i>(City and State)</i> Way Equipment/Component Maintenance & Repair Facility, Southern Pacific Rio Grande Railroad, Denver, CO	(2) YEAR COMPLETED	
	PROFESSIONAL SERVICES 2012	CONSTRUCTION <i>(If applicable)</i>
d. (3) BRIEF DESCRIPTION <i>(Brief scope, size, cost, etc.)</i> AND SPECIFIC ROLE Project Structural Engineer for a 65,000 sf vehicle and component repair facility.		
<input checked="" type="checkbox"/> Check if project performed with current firm		
(1) TITLE AND LOCATION <i>(City and State)</i>	(2) YEAR COMPLETED	
	PROFESSIONAL SERVICES	CONSTRUCTION <i>(If applicable)</i>
e. (3) BRIEF DESCRIPTION <i>(Brief scope, size, cost, etc.)</i> AND SPECIFIC ROLE		
<input type="checkbox"/> Check if project performed with current firm		

**E. RESUMES OF KEY PERSONNEL PROPOSED FOR THIS CONTRACT**

*(Complete one Section E for each key person.)*

12. NAME  Carl Richards	13. ROLE IN THIS CONTRACT  Project Electrical	14. YEARS EXPERIENCE	
		a. TOTAL 11	b. WITH CURRENT FIRM 4
15. FIRM NAME AND LOCATION <i>(City and State)</i> DeMille Architects, Walnut Creek, CA			
16. EDUCATION <i>(DEGREE AND SPECIALIZATION)</i> BS/2001 Electrical Engineering		17. CURRENT PROFESSIONAL REGISTRATION <i>(STATE AND DISCIPLINE)</i> EIT, CA;	
18. OTHER PROFESSIONAL QUALIFICATIONS <i>(Publications, Organizations, Training, Awards, etc.)</i>			

**19. RELEVANT PROJECTS**

(1) TITLE AND LOCATION <i>(City and State)</i> Helicopter Maintenance Hangar and Shops, L.A. Sheriff's Department Los Angeles, CA	(2) YEAR COMPLETED	
	PROFESSIONAL SERVICES 2011	CONSTRUCTION <i>(If applicable)</i>
a. (3) BRIEF DESCRIPTION <i>(Brief scope, size, cost, etc.)</i> AND SPECIFIC ROLE <span style="float: right;"><input checked="" type="checkbox"/> Check if project performed with current firm</span> Project Electrical Engineer for the facility programming of the sheriff's department headquarters and helicopter maintenance facility that accommodates 14 helicopters and two fixed-wing aircraft.		
(1) TITLE AND LOCATION <i>(City and State)</i> Engineering Laboratories and Offices, Lockheed ADC Palmdale, CA	(2) YEAR COMPLETED	
	PROFESSIONAL SERVICES 2011	CONSTRUCTION <i>(If applicable)</i>
b. (3) BRIEF DESCRIPTION <i>(Brief scope, size, cost, etc.)</i> AND SPECIFIC ROLE <span style="float: right;"><input checked="" type="checkbox"/> Check if project performed with current firm</span> Project Electrical Engineer for a 225,000 sf engineering building which included electronics laboratories, offices and administration, and a data and communications center.		
(1) TITLE AND LOCATION <i>(City and State)</i> Addition and Alteration of Various Facilities Vandenberg, AFB CA	(2) YEAR COMPLETED	
	PROFESSIONAL SERVICES 2010	CONSTRUCTION <i>(If applicable)</i>
c. (3) BRIEF DESCRIPTION <i>(Brief scope, size, cost, etc.)</i> AND SPECIFIC ROLE <span style="float: right;"><input checked="" type="checkbox"/> Check if project performed with current firm</span> Project Electrical Engineer for additions and alterations to Missile Maintenance Facilities, Missile Training Aids Facility, Missile and Satellite Tracking Station, Missile Launch Pads and Launch Control Towers.		
(1) TITLE AND LOCATION <i>(City and State)</i>	(2) YEAR COMPLETED	
	PROFESSIONAL SERVICES	CONSTRUCTION <i>(If applicable)</i>
d. (3) BRIEF DESCRIPTION <i>(Brief scope, size, cost, etc.)</i> AND SPECIFIC ROLE <span style="float: right;"><input type="checkbox"/> Check if project performed with current firm</span>		
(1) TITLE AND LOCATION <i>(City and State)</i>	(2) YEAR COMPLETED	
	PROFESSIONAL SERVICES	CONSTRUCTION <i>(If applicable)</i>
e. (3) BRIEF DESCRIPTION <i>(Brief scope, size, cost, etc.)</i> AND SPECIFIC ROLE <span style="float: right;"><input type="checkbox"/> Check if project performed with current firm</span>		

<b>F. EXAMPLE PROJECTS WHICH BEST ILLUSTRATE PROPOSED TEAM'S QUALIFICATIONS FOR THIS CONTRACT</b> <i>(Present as many projects as requested by the agency, or 10 projects, if not specified. Complete one Section F for each project.)</i>		20. EXAMPLE PROJECT KEY NUMBER <b>1</b>
21. TITLE AND LOCATION <i>(City and State)</i> Tactical Vehicle Maintenance Facility, Area 21 MCB Camp Pendleton, CA	22. YEAR COMPLETED	
	PROFESSIONAL SERVICES 2011	CONSTRUCTION <i>(If applicable)</i> 2012

**23. PROJECT OWNER'S INFORMATION**

a. PROJECT OWNER NAVFAC-Southwest Division	b. POINT OF CONTACT NAME Gwen Fisher	c. POINT OF CONTACT TELEPHONE NUMBER (619) 555-6767
---	---	--

24. BRIEF DESCRIPTION OF PROJECT AND RELEVANCE TO THIS CONTRACT *(Include scope, size, and cost)*

DeMille Architects designed a Tactical Vehicle Maintenance Complex for the repair and maintenance of the many types and sizes of vehicles and equipment assigned to the 1st Landing Support Battalion at Camp Pendleton.

DeMille Architects involvement included Preliminary Design, Design Plans and Specifications, and Construction Phase Services.

The maintenance complex includes:

- 18,800 sf motor transport shop for service and repair of vehicles, equipment and components
- 6,100 sf communications/electronics shop to service/repair equipment.
- 26,800 sf warehouse to store components, equipment, supplies, tools, parts
- Tracked vehicle repair bay
- Shipping/receiving area
- 10-ton bridge crane
- Wash rack with water recycle feature
- Off-loading platform for tracked vehicles
- Vehicle work pits and two-pole hydraulic lift
- Hardened concrete apron for tracked vehicle
- Vehicle exhaust collection system
- Dirt test area
- Maintenance manual and catalog library
- Training classroom
- Parts & Tool Rooms administrative offices and maintenance/foremen offices; conference rooms; break-/lunchrooms; toilet/locker/shower rooms

Contract value \$8,500,000.

**25. FIRMS FROM SECTION C INVOLVED WITH THIS PROJECT**

a.	(1) FIRM NAME DeMille Architects	(2) FIRM LOCATION <i>(City and State)</i> Walnut Creek, CA	(3) ROLE Principal Architects
b.	(1) FIRM NAME	(2) FIRM LOCATION <i>(City and State)</i>	(3) ROLE
c.	(1) FIRM NAME	(2) FIRM LOCATION <i>(City and State)</i>	(3) ROLE
d.	(1) FIRM NAME	(2) FIRM LOCATION <i>(City and State)</i>	(3) ROLE
e.	(1) FIRM NAME	(2) FIRM LOCATION <i>(City and State)</i>	(3) ROLE
f.	(1) FIRM NAME	(2) FIRM LOCATION <i>(City and State)</i>	(3) ROLE

<b>F. EXAMPLE PROJECTS WHICH BEST ILLUSTRATE PROPOSED TEAM'S QUALIFICATIONS FOR THIS CONTRACT</b> <i>(Present as many projects as requested by the agency, or 10 projects, if not specified. Complete one Section F for each project.)</i>		20. EXAMPLE PROJECT KEY NUMBER 2
21. TITLE AND LOCATION <i>(City and State)</i> Tactical Vehicle Maintenance Facility, Area 32 MCB Camp Pendleton, CA	22. YEAR COMPLETED	
	PROFESSIONAL SERVICES 2012	CONSTRUCTION <i>(If applicable)</i> 2013

**23. PROJECT OWNER'S INFORMATION**

a. PROJECT OWNER NAVFAC-Southwest Division	b. POINT OF CONTACT NAME Gwen Fisher	c. POINT OF CONTACT TELEPHONE NUMBER (619) 555-6767
---	---	--

24. BRIEF DESCRIPTION OF PROJECT AND RELEVANCE TO THIS CONTRACT *(Include scope, size, and cost)*

DeMille Architects has just finished designing a 4,800 sf Tactical Vehicle Maintenance Building for the repair and maintenance of a classified vehicle assigned to the 3rd Low Altitude Defense Battalion assigned to Area 32 of Camp Pendleton.

The Project includes a 1,400 sf Classroom/Simulator Addition to an existing building. The maintenance shop includes specially designed vehicle work platforms, a 5-ton bridge crane, hose reel racks at the service bays and a vehicle exhaust system. The shop is completely fire sprinklered. The shop includes maintenance/foreman offices, parts room, tool room, secure storage area, shop classroom, and toilet rooms. The Classroom/Simulator addition includes raised computer access flooring, air conditioning, a wet pipe sprinkler system and a below floor high pressure carbon dioxide fire suppression system.

DeMille Architects involvement included Preliminary Design, Design Plans and Specifications, and Construction Phase Services.

Contract value \$950,000.00

**25. FIRMS FROM SECTION C INVOLVED WITH THIS PROJECT**

a.	(1) FIRM NAME DeMille Architects	(2) FIRM LOCATION <i>(City and State)</i> Walnut Creek, CA	(3) ROLE Principal Architect
b.	(1) FIRM NAME	(2) FIRM LOCATION <i>(City and State)</i>	(3) ROLE
c.	(1) FIRM NAME	(2) FIRM LOCATION <i>(City and State)</i>	(3) ROLE
d.	(1) FIRM NAME	(2) FIRM LOCATION <i>(City and State)</i>	(3) ROLE
e.	(1) FIRM NAME	(2) FIRM LOCATION <i>(City and State)</i>	(3) ROLE
f.	(1) FIRM NAME	(2) FIRM LOCATION <i>(City and State)</i>	(3) ROLE



<b>F. EXAMPLE PROJECTS WHICH BEST ILLUSTRATE PROPOSED TEAM'S QUALIFICATIONS FOR THIS CONTRACT</b> <i>(Present as many projects as requested by the agency, or 10 projects, if not specified. Complete one Section F for each project.)</i>		20. EXAMPLE PROJECT KEY NUMBER <b>3</b>
21. TITLE AND LOCATION <i>(City and State)</i> Way Equipment/Component Maintenance and Repair Facility Southern Pacific Railroad, Denver, CO	22. YEAR COMPLETED	
	PROFESSIONAL SERVICES <b>2012</b>	CONSTRUCTION <i>(If applicable)</i>

**23. PROJECT OWNER'S INFORMATION**

a. PROJECT OWNER Southern Pacific Transportation Co.	b. POINT OF CONTACT NAME M. N. Kirschbaum	c. POINT OF CONTACT TELEPHONE NUMBER (510) 555-9876
---	--	--

24. BRIEF DESCRIPTION OF PROJECT AND RELEVANCE TO THIS CONTRACT *(Include scope, size, and cost)*

DeMille Architects designed a 65,000 sf light industrial "flexible format" facility to accommodate the repair of the full range of vehicles, equipment, and component parts used for maintenance of Southern Pacific's extensive rail transportation system. Large/heavy vehicle types include rubber tire, continuous tread i.e. bulldozer and rail-mounted maintenance vehicles and equipment. Features include:

- Processed maintenance: wash, repair, inspect & paint
- 34 high-bay maintenance/repair cells
- Wash building, which includes wash pit and high-pressure hot water washing systems
- Warehousing large parts and components with Bar Coding Retrieval System
- Repair of rail, tire and tracked vehicles
- (2) 30-ton overhead and (2) 10-ton cranes; over twenty 3 to 5-ton jib cranes
- Communications/electronics shop
- Support shops - machine, sheet metal paint, etc.
- Administrative offices, library & training Classroom
- Inspection pit
- Vehicle exhaust collection systems
- Industrial waste treatment facility; HazMat waste collect/store
- Site semi-gantry crane, loading doc, track and five turntables.

DeMille Architects involvement included Master Planning, Programming, A-E Design Services, Interiors, Landscaping, and Construction Support

Contract value \$12,000,000.

**25. FIRMS FROM SECTION C INVOLVED WITH THIS PROJECT**

a.	(1) FIRM NAME DeMille Architects	(2) FIRM LOCATION <i>(City and State)</i> Walnut Creek	(3) ROLE Principal Architect/Planner
b.	(1) FIRM NAME	(2) FIRM LOCATION <i>(City and State)</i>	(3) ROLE
c.	(1) FIRM NAME	(2) FIRM LOCATION <i>(City and State)</i>	(3) ROLE
d.	(1) FIRM NAME	(2) FIRM LOCATION <i>(City and State)</i>	(3) ROLE
e.	(1) FIRM NAME	(2) FIRM LOCATION <i>(City and State)</i>	(3) ROLE
f.	(1) FIRM NAME	(2) FIRM LOCATION <i>(City and State)</i>	(3) ROLE

<b>F. EXAMPLE PROJECTS WHICH BEST ILLUSTRATE PROPOSED TEAM'S QUALIFICATIONS FOR THIS CONTRACT</b> <i>(Present as many projects as requested by the agency, or 10 projects, if not specified. Complete one Section F for each project.)</i>		20. EXAMPLE PROJECT KEY NUMBER 4
21. TITLE AND LOCATION <i>(City and State)</i> Rail System Maintenance Complex Southern Pacific Railroad Oakland CA	22. YEAR COMPLETED	
	PROFESSIONAL SERVICES 2010	CONSTRUCTION <i>(If applicable)</i> 2011

**23. PROJECT OWNER'S INFORMATION**

a. PROJECT OWNER Southern Pacific Transportation Co.	b. POINT OF CONTACT NAME M. N. Kirschbaum	c. POINT OF CONTACT TELEPHONE NUMBER (510) 555-9876
---	--	--

24. BRIEF DESCRIPTION OF PROJECT AND RELEVANCE TO THIS CONTRACT *(Include scope, size, and cost)*

DeMille Architects designed a light industrial rail yard maintenance facility including a railcar repair facility, specialized support shops, work areas and site improvements, including:

- 30,000 sf railcar repair complex
- High-bay facility
- Overhead crane system (5-ton)
- 150-ton jacking (railcar lifting) system
- 90-ton drop table used to change passenger car wheel sets and locomotive traction motors.
- Warehousing of parts, components and equipment
- Material handling systems
- Inspection pits, off-loading platform
- 25,000 sf communications department maintenance shop includes electronics
- Commissary for Amtrak
- Administrative and employee areas for Southern Pacific & Amtrak personnel
- Support facilities include industrial waste systems and HazMat waste collection/storage
- Bridge & Building and Water Department Service Shops

DeMille Architects involvement included Master Planning, Programming, A-E Design Services, Interiors, and Construction Support.

Contract Value \$20,000,000.

**25. FIRMS FROM SECTION C INVOLVED WITH THIS PROJECT**

a.	(1) FIRM NAME DeMille Architects	(2) FIRM LOCATION <i>(City and State)</i> Walnut Creek, CA	(3) ROLE Principal Architect
b.	(1) FIRM NAME	(2) FIRM LOCATION <i>(City and State)</i>	(3) ROLE
c.	(1) FIRM NAME	(2) FIRM LOCATION <i>(City and State)</i>	(3) ROLE
d.	(1) FIRM NAME	(2) FIRM LOCATION <i>(City and State)</i>	(3) ROLE
e.	(1) FIRM NAME	(2) FIRM LOCATION <i>(City and State)</i>	(3) ROLE
f.	(1) FIRM NAME	(2) FIRM LOCATION <i>(City and State)</i>	(3) ROLE

<b>F. EXAMPLE PROJECTS WHICH BEST ILLUSTRATE PROPOSED TEAM'S QUALIFICATIONS FOR THIS CONTRACT</b> <i>(Present as many projects as requested by the agency, or 10 projects, if not specified. Complete one Section F for each project.)</i>		20. EXAMPLE PROJECT KEY NUMBER <b>5</b>
21. TITLE AND LOCATION <i>(City and State)</i> Vehicle and Equipment Maintenance Facilities 12th Air Force Headquarters Tactical Air Operations Complex, Davis-Monthan AFB, Tucson, AZ	22. YEAR COMPLETED	
	PROFESSIONAL SERVICES 2010	CONSTRUCTION <i>(If applicable)</i> 2011

**23. PROJECT OWNER'S INFORMATION**

a. PROJECT OWNER U.S. Army Corps of Engineers	b. POINT OF CONTACT NAME Jordan Clarke	c. POINT OF CONTACT TELEPHONE NUMBER (916) 555-6955
--	---	--

24. BRIEF DESCRIPTION OF PROJECT AND RELEVANCE TO THIS CONTRACT *(Include scope, size, and cost)*

DeMille Architects provided engineering services for a vehicle maintenance functions provided as part of the Tactical Air Operations Complex (TAOC) include:

- Cleaning, stripping, and painting of modular equipment and transportation vehicles for air operations support activities
- VOC abatement; environmental mitigation
- Vehicle wash rack
- Secure compounds for continuous operation of tactical equipment
- Utility infrastructures for fiber optic communications and antenna connections
- Tool parts storage systems
- Material handling systems

DeMille Architects involvement included A-E Design, Cost Estimating, Interiors, and Landscaping (design based on previously prepared project definition)

Contract Value \$8,800,000.

**25. FIRMS FROM SECTION C INVOLVED WITH THIS PROJECT**

a.	(1) FIRM NAME DeMille Architects	(2) FIRM LOCATION <i>(City and State)</i> Walnut Creek, CA	(3) ROLE Principal Architects
b.	(1) FIRM NAME	(2) FIRM LOCATION <i>(City and State)</i>	(3) ROLE
c.	(1) FIRM NAME	(2) FIRM LOCATION <i>(City and State)</i>	(3) ROLE
d.	(1) FIRM NAME	(2) FIRM LOCATION <i>(City and State)</i>	(3) ROLE
e.	(1) FIRM NAME	(2) FIRM LOCATION <i>(City and State)</i>	(3) ROLE
f.	(1) FIRM NAME	(2) FIRM LOCATION <i>(City and State)</i>	(3) ROLE

<b>F. EXAMPLE PROJECTS WHICH BEST ILLUSTRATE PROPOSED TEAM'S QUALIFICATIONS FOR THIS CONTRACT</b> <i>(Present as many projects as requested by the agency, or 10 projects, if not specified. Complete one Section F for each project.)</i>		20. EXAMPLE PROJECT KEY NUMBER <b>6</b>
21. TITLE AND LOCATION <i>(City and State)</i> Vehicle Maintenance and Administrative Complex Phoenix, AZ	22. YEAR COMPLETED	
	PROFESSIONAL SERVICES 2009	CONSTRUCTION <i>(If applicable)</i> 2010

**23. PROJECT OWNER'S INFORMATION**

a. PROJECT OWNER Paradise Valley Unified School District	b. POINT OF CONTACT NAME Jordan Green	c. POINT OF CONTACT TELEPHONE NUMBER (602) 555-5106
---	--	--

24. BRIEF DESCRIPTION OF PROJECT AND RELEVANCE TO THIS CONTRACT *(Include scope, size, and cost)*

DeMille Architects designed a 75,000 sf vehicle maintenance, repair, and administrative complex for the District's Transportation, facilities and construction departments (100+ buses, 170 vehicle fleet, components and equipment) including:

- 12-acre site with controlled access
- Complete site infrastructure, development, and landscaping
- Washracks
- Fueling facility
- Service bays for large/heavy vehicles; five hydraulic lifts
- Waste Reclamation
- Overhead cranes
- Components and equipment repair shops
- Support shops - welding, painting, carpentry, machine, body
- Components, parts and equipment storage systems
- Dynamometer
- Administrative and project support offices
- Extensive programming reviewed operational procedures, extent of reuse of existing equipment

DeMille Architects involvement included Facilities Programming, Planning, A-E Design, Interiors, Landscape Architecture, Cost Estimates, Scheduling, Value Engineering.

Contract Value \$6,000,000

**25. FIRMS FROM SECTION C INVOLVED WITH THIS PROJECT**

a.	(1) FIRM NAME DeMille Architects	(2) FIRM LOCATION <i>(City and State)</i> Walnut Creek, CA	(3) ROLE Principal Architects
b.	(1) FIRM NAME	(2) FIRM LOCATION <i>(City and State)</i>	(3) ROLE
c.	(1) FIRM NAME	(2) FIRM LOCATION <i>(City and State)</i>	(3) ROLE
d.	(1) FIRM NAME	(2) FIRM LOCATION <i>(City and State)</i>	(3) ROLE
e.	(1) FIRM NAME	(2) FIRM LOCATION <i>(City and State)</i>	(3) ROLE
f.	(1) FIRM NAME	(2) FIRM LOCATION <i>(City and State)</i>	(3) ROLE

<b>F. EXAMPLE PROJECTS WHICH BEST ILLUSTRATE PROPOSED TEAM'S QUALIFICATIONS FOR THIS CONTRACT</b> <i>(Present as many projects as requested by the agency, or 10 projects, if not specified. Complete one Section F for each project.)</i>		20. EXAMPLE PROJECT KEY NUMBER <b>7</b>
21. TITLE AND LOCATION <i>(City and State)</i> Composite Maintenance Hangar, California Air National Guard Moffett Field, CA	22. YEAR COMPLETED	
	PROFESSIONAL SERVICES 2011	CONSTRUCTION <i>(If applicable)</i> 2013

**23. PROJECT OWNER'S INFORMATION**

a. PROJECT OWNER California Air National Guard	b. POINT OF CONTACT NAME Sam Adams	c. POINT OF CONTACT TELEPHONE NUMBER (619) 879-5512
---	---------------------------------------	--

24. BRIEF DESCRIPTION OF PROJECT AND RELEVANCE TO THIS CONTRACT *(Include scope, size, and cost)*

DeMille Architects provided engineering and design services for a 62,000 sf composite maintenance hangar for C-130s, C-17s and helicopter repair and maintenance with full function support shops, offices, training area, storage and toilet & locker room for men and women:

- 7-acre site planning and design including landscaping, aircraft parking and runway location coordination
- Complete site infrastructure of new installation and integration to existing including fire water, high pressure water, and AFFF underground holding tank
- 35,000 sf hangar floor for one C-17, or two C-130s, or several helicopters with trench drain and AFFF system
- Shops - machine/sheet metal, nondestructive inspection, x-ray, blast/cleaning, composite materials, hydraulic, fuel and storage
- Innovative long span steel frame, economical building enclosure with natural light and unobstructed 280 ft clear hangar door opening

DeMille Architects involvement included Facilities Programming, Planning, A-E Design, Interiors, Landscape Architecture, Cost Estimates, Life Cycle Energy, Scheduling, and Value Engineering

Contract Value \$11,246,000.

**25. FIRMS FROM SECTION C INVOLVED WITH THIS PROJECT**

a.	(1) FIRM NAME DeMille Architects	(2) FIRM LOCATION <i>(City and State)</i> Walnut Creek, CA	(3) ROLE Principal Architects
b.	(1) FIRM NAME	(2) FIRM LOCATION <i>(City and State)</i>	(3) ROLE
c.	(1) FIRM NAME	(2) FIRM LOCATION <i>(City and State)</i>	(3) ROLE
d.	(1) FIRM NAME	(2) FIRM LOCATION <i>(City and State)</i>	(3) ROLE
e.	(1) FIRM NAME	(2) FIRM LOCATION <i>(City and State)</i>	(3) ROLE
f.	(1) FIRM NAME	(2) FIRM LOCATION <i>(City and State)</i>	(3) ROLE

<b>F. EXAMPLE PROJECTS WHICH BEST ILLUSTRATE PROPOSED TEAM'S QUALIFICATIONS FOR THIS CONTRACT</b> <i>(Present as many projects as requested by the agency, or 10 projects, if not specified. Complete one Section F for each project.)</i>		20. EXAMPLE PROJECT KEY NUMBER <b>8</b>
21. TITLE AND LOCATION <i>(City and State)</i> Helicopter Maintenance Hangars and Shops for Aero Bureau Headquarters La Verne, CA	22. YEAR COMPLETED	
	PROFESSIONAL SERVICES <b>2010</b>	CONSTRUCTION <i>(If applicable)</i>

**23. PROJECT OWNER'S INFORMATION**

a. PROJECT OWNER County of Los Angeles	b. POINT OF CONTACT NAME R. S. McBane	c. POINT OF CONTACT TELEPHONE NUMBER (213) 555-2172
---	--	--

24. BRIEF DESCRIPTION OF PROJECT AND RELEVANCE TO THIS CONTRACT *(Include scope, size, and cost)*

DeMille Architects designed the 66,000 sf Aero Bureau facilities, including the following:

- Helicopter maintenance hangar with an operations control center
- Maintenance shops (Maintenance is a critical requirement for Aero Bureau Operations.)
- Aircraft apron and taxiways
- Two helipads for simultaneous takeoff and landing
- Hot fueling stations, fuel distribution systems and storage
- An administration building
- A steel frame system with a total height of approximately 40 feet and an 80-foot wide by 400-foot long hangar area
- The control center is the communications center and dispatch for all flight activities. The control center will be equipped with radio scanners to monitor radio transmissions from other agencies.
- Project included interface with FAA and other planning agencies to develop and secure helicopter flight patterns

DeMille Architects involvement included Programming, Preliminary and Final Designs, Construction Documents.

Contract Value \$10,000,000

**25. FIRMS FROM SECTION C INVOLVED WITH THIS PROJECT**

a.	(1) FIRM NAME DeMille Architects	(2) FIRM LOCATION <i>(City and State)</i> Walnut Creek, CA	(3) ROLE Principal Architects
b.	(1) FIRM NAME	(2) FIRM LOCATION <i>(City and State)</i>	(3) ROLE
c.	(1) FIRM NAME	(2) FIRM LOCATION <i>(City and State)</i>	(3) ROLE
d.	(1) FIRM NAME	(2) FIRM LOCATION <i>(City and State)</i>	(3) ROLE
e.	(1) FIRM NAME	(2) FIRM LOCATION <i>(City and State)</i>	(3) ROLE
f.	(1) FIRM NAME	(2) FIRM LOCATION <i>(City and State)</i>	(3) ROLE

<b>F. EXAMPLE PROJECTS WHICH BEST ILLUSTRATE PROPOSED TEAM'S QUALIFICATIONS FOR THIS CONTRACT</b> <i>(Present as many projects as requested by the agency, or 10 projects, if not specified. Complete one Section F for each project.)</i>		20. EXAMPLE PROJECT KEY NUMBER 9
21. TITLE AND LOCATION <i>(City and State)</i> Modification to Aircraft Paint Hangar Building 610 for the F-22 Program Palmdale, CA	22. YEAR COMPLETED	
	PROFESSIONAL SERVICES 2009	CONSTRUCTION <i>(If applicable)</i> 2010

**23. PROJECT OWNER'S INFORMATION**

a. PROJECT OWNER Lockheed Advanced	b. POINT OF CONTACT NAME George Graves	c. POINT OF CONTACT TELEPHONE NUMBER (818) 555-6730
---------------------------------------	---	--

24. BRIEF DESCRIPTION OF PROJECT AND RELEVANCE TO THIS CONTRACT *(Include scope, size, and cost)*

Building 610 was originally constructed as an Aircraft Paint Hangar for the L-1011 aircraft and was configured as two highbay areas within a single building volume. In light of new upcoming programs, including the F-22, LADC retained DeMille Architects to modify and upgrade the existing painting facilities. Modifications to building 610 under DeMille's contract included:

- Building lockdown comprising installation of an overall access control system
- Modifications to the control functions of the travelling gantry
- Conversion of the fuselage painting area to a model shop area
- Relocation of model shops and two anechoic chambers (a compact range and a parallel plate chamber) from Burbank to Building 610
- Refurbishment of the ventilation system dust collection system)
- Existing fire protection system was upgraded and a new deluge fire protection system added for the anechoic chambers

DeMille Architects completed this project as a Design-Build

Contract Value \$2,600,000.

**25. FIRMS FROM SECTION C INVOLVED WITH THIS PROJECT**

a.	(1) FIRM NAME DeMille Architects	(2) FIRM LOCATION <i>(City and State)</i> Walnut Creek, CA	(3) ROLE Principal Architects
b.	(1) FIRM NAME	(2) FIRM LOCATION <i>(City and State)</i>	(3) ROLE
c.	(1) FIRM NAME	(2) FIRM LOCATION <i>(City and State)</i>	(3) ROLE
d.	(1) FIRM NAME	(2) FIRM LOCATION <i>(City and State)</i>	(3) ROLE
e.	(1) FIRM NAME	(2) FIRM LOCATION <i>(City and State)</i>	(3) ROLE
f.	(1) FIRM NAME	(2) FIRM LOCATION <i>(City and State)</i>	(3) ROLE

<b>F. EXAMPLE PROJECTS WHICH BEST ILLUSTRATE PROPOSED TEAM'S QUALIFICATIONS FOR THIS CONTRACT</b> <i>(Present as many projects as requested by the agency, or 10 projects, if not specified. Complete one Section F for each project.)</i>		20. EXAMPLE PROJECT KEY NUMBER <b>10</b>
21. TITLE AND LOCATION <i>(City and State)</i> Vehicle Scientific Test Facilities Complex Auburn Hills, Michigan	22. YEAR COMPLETED	
	PROFESSIONAL SERVICES 2010	CONSTRUCTION <i>(If applicable)</i>

**23. PROJECT OWNER'S INFORMATION**

a. PROJECT OWNER Chrysler Motor Co.	b. POINT OF CONTACT NAME Sally Lansing	c. POINT OF CONTACT TELEPHONE NUMBER (589) 777-5561
--	---	--

24. BRIEF DESCRIPTION OF PROJECT AND RELEVANCE TO THIS CONTRACT *(Include scope, size, and cost)*

DeMille Architects designed four state-of-the-art vehicle test facilities, along with administrative offices and support offices. Test facilities included an Environmental Test Center with altitude, climatic and emissions test cells. the project included twelve separate cells for testing full-size vehicles and engines under a wide range of environmental conditions: temperatures from -40 to 125 degrees farenheit; humidities from 20 to 95%; altitudes to 10,000 feet; solar (infrared heating), rain, snow, heated road, and heated boundary simulation.

The Aero/Thermodynamic Acoustic Wind Tunnel provides aerodynamic test and development including drag reduction to maximize fuel economy, crosswind handling, underhood and underbody temperature distribution and brake cooling.

The Electromagnetic Compatibility Test Facility provides a means for ensuring compatibility between vehicle electrical systems and the electromagnetic operating environment.

The Powertrain Test Center provides the capability to simulate various conditions affecting powertrain components including road-load conditions, manual and automatic shifting and hot and cold starting.

DeMille Architects was responsible for completing all Design and Construction documents.

Contract Value\$ 25,000,000.

**25. FIRMS FROM SECTION C INVOLVED WITH THIS PROJECT**

<b>a.</b>	(1) FIRM NAME DeMille Architects	(2) FIRM LOCATION <i>(City and State)</i> Walnut Creek, CA	(3) ROLE Principal Architects
<b>b.</b>	(1) FIRM NAME	(2) FIRM LOCATION <i>(City and State)</i>	(3) ROLE
<b>c.</b>	(1) FIRM NAME	(2) FIRM LOCATION <i>(City and State)</i>	(3) ROLE
<b>d.</b>	(1) FIRM NAME	(2) FIRM LOCATION <i>(City and State)</i>	(3) ROLE
<b>e.</b>	(1) FIRM NAME	(2) FIRM LOCATION <i>(City and State)</i>	(3) ROLE
<b>f.</b>	(1) FIRM NAME	(2) FIRM LOCATION <i>(City and State)</i>	(3) ROLE



**G. KEY PERSONNEL PARTICIPATION IN EXAMPLE PROJECTS**

26. NAMES OF KEY PERSONNEL (From Section E, Block 12)	27. ROLE IN THIS CONTRACT (From Section E, Block 13)	28. EXAMPLE PROJECTS LISTED IN SECTION F (Fill in "Example Projects Key" section below before completing table. Place "X" under project key number for participation in same or similar role.)									
		1	2	3	4	5	6	7	8	9	10
Arthur Carlson	Project Principal Architect	X	X			X	X	X	X		X
Jacob Esterly	Project Manager	X	X	X	X	X	X		X		X
George Thompson	Structural Engineer	X	X	X	X						
Toby Eastwick	Mechanical Engineer	X	X	X	X			X		X	
Carl Richards	Electrical Engineer	X	X	X	X			X	X	X	

**29. EXAMPLE PROJECTS KEY**

NO.	TITLE OF EXAMPLE PROJECT (FROM SECTION F)	NO.	TITLE OF EXAMPLE PROJECT (FROM SECTION F)
1	Tactical Vehicle Maintenance Facility, Area 21	6	Vehicle Maintenance and Administrative Complex
2	Tactical Vehicle Maintenance Facility, Area 32	7	Composite Maintenance Hangar-CA Air National Guard
3	Way Equipment/Component Maint & Repair	8	Helicopter Maintenance Hangars & Shops for Aero
4	Rail System Maintenance Complex	9	Modification to Aircraft Paint Hangar Building 610 - F22
5	Vehicle & Equipment Maintenance Facilities - AF	10	Vehicle Scientific Test Facilities Complex - Michigan

30. Use this space to provide any additional information or description of resources (including any computer design capabilities) supporting your firm's qualifications for the proposed project.

## **BLOCK 30 - TABLE OF CONTENTS**

- INTRODUCTION**
- A. SPECIALIZED RECENT EXPERIENCE**
- B. PROFESSIONAL QUALIFICATIONS**
- C. PAST PERFORMANCE**
- D. CAPACITY TO ACCOMPLISH WORK**
- E. VOLUME OF DOD CONTRACTS**
- F. GEOGRAPHIC PROXIMITY**
- G. SMALL BUSINESS PLAN**
- H. PROJECT MANAGEMENT**

### **INTRODUCTION**

DeMille Architects has been providing clients with architectural, engineering, planning, environmental, and construction services for more than sixty-three years. Since its founding in 1930, DeMille Architects has grown to become one of the country's largest and most diversified professional services firm, with more than 3,800 employees located in 35 offices nationwide. Today, DeMille is recognized as a leader in several market areas including the design and construction of government and defense-related facilities. Active in California since 1935, DeMille has offices in Walnut Creek, Costa Mesa and Phoenix, AZ.

### **A. SPECIALIZED RECENT EXPERIENCE**

DeMille has successfully completed a variety of light industrial and maintenance type projects including hangar bays and shops; maintenance facilities, and warehouses.

Our Block 8 Projects and our Relevant Experience Matrix, (Exhibit 1 on the following page) demonstrate our complete range of relevant experience.

### ***CADD Capability***

DeMille's offices are fully equipped with extensive CADD capabilities. Our offices utilize AutoCAD and Intergraph CADD systems which are linked via a Novell Local-Area Network (LAN).

Our various office locations are linked via a Wide-Area Network (WAN) that provides 56K baud-per-second connectivity between the LANs each of our offices. This system provides for maximum security and immediate transmission of data, drawings, and correspondence at any time. Team members are able to work from remote locations as though they were physically present, allowing DeMille to apply any portion of the full force of its nationwide resources on a single project. In addition to our WAN and LAN system, we are able to access the Corps of Engineers bulletin board and the Sacramento District's Automated Review Management System (ARMS).

### ***Document Control***

DeMille's electronic capabilities allow contract plans and specifications to be developed, printed/plotted, and updated at computer workstations throughout the corporation, regardless of location. The control of contract documents is through the electronic data management system AutoEDMS2. AutoEDMS2 tracks and archives multiple revisions of drawings, specifications, and other contract documents in a network environment, ensuring that team members are using the most recent version of a drawing or document.

### ***SPECSINTACT***

DeMille is experienced with using the Construction Criteria Base (CCB SPECSINTACT system. We have the CCB CD-ROM

30. Use this space to provide any additional information or description of resources (including any computer design capabilities) supporting your firm's qualifications for the proposed project.

**Exhibit 1 - Relevant Project Experience**

Block 8 Projects	Relevant Project Elements																				
	Light Industrial	Maintenance Shops	Warehouse Shops	Simple Processing Facilities	Hangar Bays	New Facilities	Renovation/Addition to existing Facilities	Offices & Support Facilities	Parts, Tools & Equipment Storage	Security Features	Computer Rooms	Fire Suppression Systems	Site Improvements	Site Utilities	HVAC	Communications Systems	Site Fencing Systems	Programming/Criteria Development	Site Data Investigation/Charette Process	Material Handling Systems	
Tactical Vehicle Maintenance Facility (21 Area) Marine Corps Base Camp Pendleton, CA																					
Tactical Vehicle Maintenance Facility (32 Area) Marine Corps Base Camp Pendleton, CA																					
Way Equipment/Component Maintenance & Repair Facility Southern Pacific Railroad, Denver CO																					
Rail System Maintenance Complex Southern Pacific Rail Road Oakland, CA																					
Vehicle & Equipment Maintenance Facility 12th Air Force Davis Monthan AFB, Tucson, AZ																					
Vehicle/Equipment Maintenance & Administrative Complex Paradise Valley School District Phoenix, AZ																					
Composite Maintenance Hangar California Air National Guard Moffett Field, CA																					
Helicopter Maintenance Hangar & Shops Aero Bureau Headquarters La Verne, CA																					
Modifications to Aircraft Paint Hangar Lockheed Advanced Development Company Palmdale, CA																					
Vehicle Scientific Test Facilities Complex, Chrysler Motors Auburn, MI																					

30. Use this space to provide any additional information or description of resources (including any computer design capabilities) supporting your firm's qualifications for the proposed project.

system in-house and are well-versed in the use of SPECSINTACT guide specifications.

### **Metrification**

DeMille Architects has prepared a number of its recent projects using metric units. We are familiar with the NAVY's metrification guidelines and have used them successfully in the past. Fiscal year 1997 projects with the NAVY are being prepared using metric units for drawings, specifications and cost estimates.

### **Prior Security Clearances**

DeMille Architects has been a major player in providing A-E Service to the Department of Defense worldwide, and currently has over 20 individuals available with appropriate security clearances. We also have a number of people with inactive secret clearances, which we can reactivate as needed. In addition, project team members without existing clearances will obtain appropriate security clearance as required.

### **Cost Control - Cost Control Procedures**

DeMille Architects provides design services and complete design/build construction management, and general contracting services. Our knowledge of and participation in, the contracting community gives us an in-depth knowledge of construction costs. DeMille's in-house construction estimating and construction supervision staff are utilized throughout the design process to provide the design staff with input on details which can be constructed in the most cost-efficient manner, as well as materials and methods which need to be used to stay within the budget.

In the early stages of the design process, unit costs per square foot are used to establish the proposed budget. As the design process evolves and better definition of the scope is attained, construction costs are refined using historical cost data and input from local vendors and subcontractors to narrow the margin of leeway in the construction budget. When budget problems are revealed, DeMille designers work with DeMille's construction staff to find innovative

approaches to control the cost of the project. Cost estimates are generated using computers in a variety of formats depending upon the client's needs. We are familiar with the Navy's estimating format as well as the Corps of Engineers Computer Aided Cost Estimating System (M-CACES). If desired, we can prepare estimates for your projects in the M-CACES format.

We have specialized experience in the design of new facilities, renovations of existing buildings and additions to existing buildings. An example of this performance is illustrated by Exhibit 2. We have expertise in the design of metal buildings (both engineered and non-engineered), masonry buildings paved in place concrete, precast concrete as well as other building types.

<b>Block 8 Project</b>	<b>A-E Estimate</b>	<b>Low Bid</b>
Way Equipment/Component Maintenance & Repair Facility Southern Pacific Railroad, Denver CO	\$14,000,000	\$12,000,000
Rail System Maintenance Complex Southern Pacific Rail Road Oakland, CA	\$ 9,000,000	\$ 8,500,000
Vehicle/Equipment Maintenance & Administrative Complex Paradise Valley School District Phoenix, AZ	\$ 7,500,000	\$ 6,000,000

DeMille is proud of its track record of consistently providing a high quality of professional services. The ability to deliver high quality on time and on budget has resulted in satisfied clients as proven by the fact that more than 85% of our business is for repeat clients. We have met the challenges of small facility projects, as well as multimillion dollar capital expansion programs for DoD, other federal agencies, and private industry.

### **B. PROFESSIONAL QUALIFICATIONS**

To meet the specialized requirements of this contract, DeMille has selected a team of experienced architects, engineers and consultants who are thoroughly versed in government contract standards and procedures.

30. Use this space to provide any additional information or description of resources (including any computer design capabilities) supporting your firm's qualifications for the proposed project.

### Exhibit 3 - Key Staff Experience

Block 8 Projects	Relevant Project Elements																			
	Light Industrial	Maintenance Shops	Warehouse Facilities	Simple Processing Facilities	Hangar Bays	New Facilities	Renovation/Addition to existing Facilities	Offices & Support Facilities	Parts, Tools & Equipment Storage	Security Features	Computer Rooms	Fire Suppression Systems	Site Improvements	Site Utilities	HVAC	Communications Systems	Site Fencing/Paving	Programming/Criteria Development	Site Data Investigation/Charette Process	Material Handling Systems
Project Principal																				
Project Manager																				
Quality Control Manager																				
Programming/Criteria Development																				
Facility Design/Architect																				
Site Development/Site Planning																				
Architect																				
Site Planning/Landscape																				
Environmental Engineering																				
Architect																				
Structural Engineering																				
Structural Engineering																				
Mechanical/Fire Protection																				
Electrical Engineering																				
Communications/I.M.S.																				
Construction Cost/Estimate Control																				
Programming/Processing Design																				

30. Use this space to provide any additional information or description of resources (including any computer design capabilities) supporting your firm's qualifications for the proposed project.

who are thoroughly versed in government contract standards and procedures.

The Project Team Organization Chart is shown in Block 7. Most of our key team members have had recent DOD experience. The DeMille team key staff has specific experience relevant to this project. This is demonstrated in our Block 7 resumes and in our Key Staff Experience Matrix Exhibit 3 on the following page. If technical expertise is required in other specialized areas, it can be drawn from DeMille's diverse and experienced resource base of over 3,800 personnel.

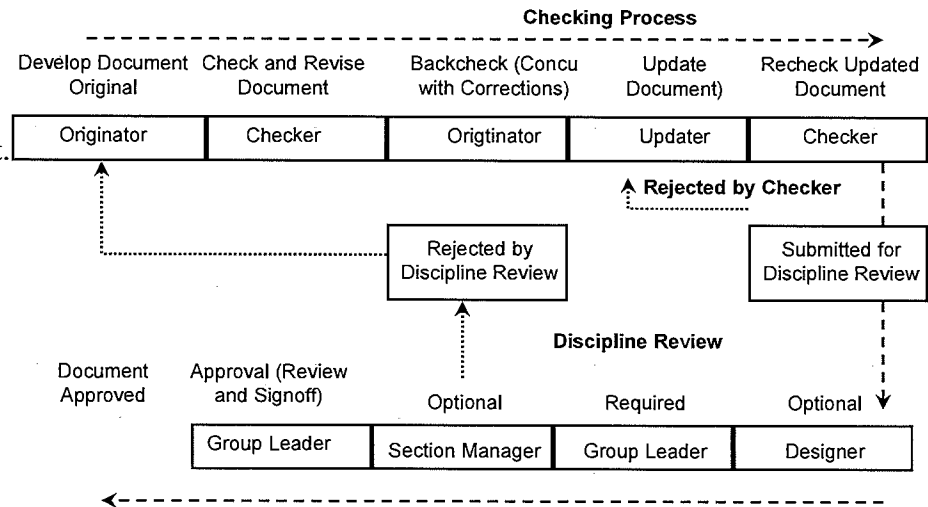
### C. PAST PERFORMANCE COST CONTROL

#### Quality of Work - Quality Control Procedures

Total Quality Management (TQM) provides the overall context in which DeMille's Architectural/Engineering services are applied to NAVFAC projects. An integral part of DeMille's TQM program is our comprehensive Quality Control (QC) procedures.

DeMille's QC procedures address a range of projects including single-discipline, multi-discipline, design, procurement, contract documents, and field investigations. Our procedures are documented in a formal Design Quality Control Plan. Our single discipline QC follows a four step sequence of checking, back-checking, rechecking, and reviewing with a color coding system used to identify corrections and correction verifications. Our review procedures require that discipline-reviewed documents are reviewed by the other disciplines on the project team. This multi-discipline review significantly decreases the possibility of interface problems that can appear during construction and installation. DeMille's discipline and multi-discipline checking procedures are based on a modified version of the Navy Redicheck system.

Exhibit 4 summarizes our QA/AC procedures.



The DeMille Team will submit a Quality Control Program to the Corps of Engineers Project Manager for approval. This plan will identify the procedures to be implemented by the DeMille Team. Further, the plan will describe the manner for documenting the check and review processes, for recording that detailed procedures were followed, and for verifying the work activities. The plan will also describe the frequency and type of audits to be conducted to ensure compliance with quality standards.

DeMille's Quality Control procedures have proved to be very effective in minimizing construction change orders attributed to design deficiencies.

The responsibility for implementing these procedures will be shared by both the Project Principal, Arthur Carlson and the Project Manager, Jacob Easterly, DeMille's Regional TQM manager, will have overall responsibility to review this project and verify that DeMille's established quality assurance programs are carried out.

It will be the role of each discipline manager to assure that all documentation is checked by "another set of eyes" to ensure that requirements

30. Use this space to provide any additional information or description of resources (including any computer design capabilities) supporting your firm's qualifications for the proposed project.

and objectives are met in accordance with the contract and scope documents.

**Compliance with Performance Schedules**

DeMille has a consistent record of meeting performance schedules, including accelerated-schedule projects such as fast-track design and full design/build.

We encourage you to contact the following individuals to verify our current performance on DOD contracts.

Jennifer Early-Jones  
 Southwest Division  
 Suite #P113, Area 32, TVMF  
 (619) 555-

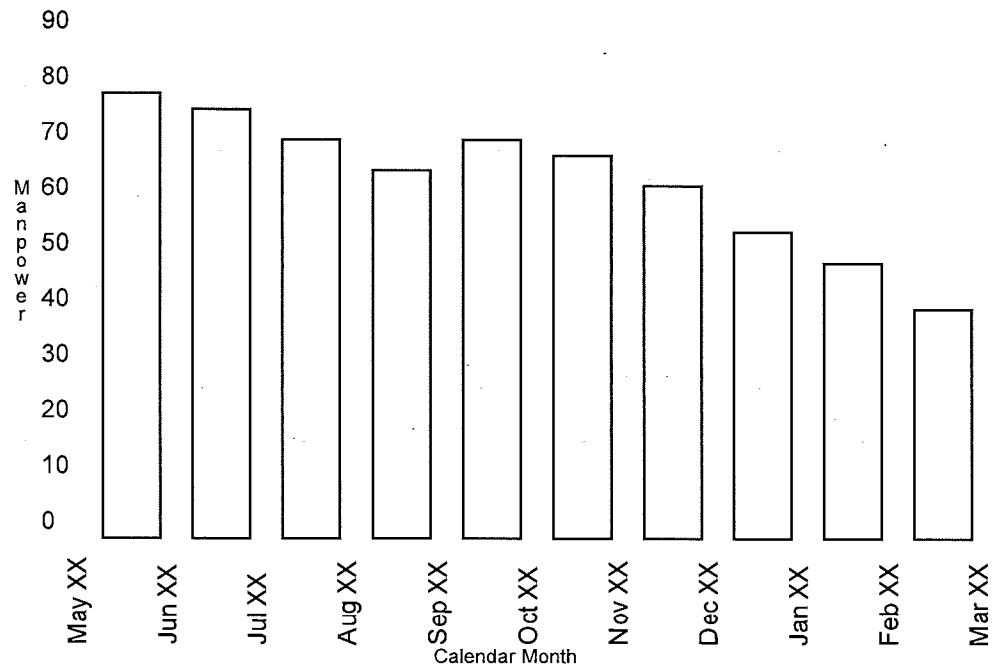
Roger Brewer  
 Southwest Division  
 P#113, Area 21, TVMF  
 (619) 555-

**D. CAPACITY TO ACCOMPLISH WORK**

The DeMille team members presented in this submittal are fully committed to giving this project their highest priority. We have the available manpower for this project as do our subconsultants. Our Project Principal and Project Manager are both dedicated to making available all resources needed to that your project schedule will be met.

**Present Firm Workload**

Exhibit 5, Manpower Availability, illustrates the impact of current projects on our workload. DeMille's Western Operations projected manpower availability for the next ten months is shown in the chart below. Our available manpower increases during the later months of this year, and the following year which will enable DeMille to assign adequate staffing to support your project's needs.



**E. VOLUME OF DOD CONTRACTS**

For a list of our recent DOD contract awards, refer to Block 9. The following is a list of recent DeMille DOD projects that have received awards or accommodations:

- Engineering Excellence Grand Conceptor Award  
 American Consulting Engineers Council  
 Space Shuttle Complex, Vandenberg AFB, CA
- Commitment to Excellence Award  
 US Army COE, Payload Preparation Facility  
 Vandenberg AFB, CA
- Commitment to Excellence Award  
 US Army COE, Ice Suppression System  
 Vandenberg AFB, CA

30. Use this space to provide any additional information or description of resources (including any computer design capabilities) supporting your firm's qualifications for the proposed project.

- Merit Award - Housing Projects  
20XX USAF Design Awards  
Replacement Housing Phase I, Vandenberg AFB, CA
- Honor Award - Planning Projects  
20XX USAF Design Awards for AMC Commander's  
Excellence and Facilities Design Guide  
HQ Air Mobility Command, Scott AFB, IL

**F. OFFICE LOCATIONS IN GENERAL GEOGRAPHIC AREA**

All work on this project will be based out of our Walnut Creek office. Depending on the geographical location of the project, our project team can use our Costa Mesa and Phoenix offices. Our Walnut Creek office is one hour driving distance from the Corps of Engineers Sacramento District Office

**G. SMALL BUSINESS PLAN**

In addition to in-house staff, we are strengthening our capabilities by using the expertise of specialty subconsultants which are small/ small disadvantaged business as on our project team:

<i>Firm</i>	<i>Specialty</i>	<i>Type</i>
Tipton, Inc	Geotechnical	DBE
Border Suveying	Surveying Services	DBE/WBE

DeMille has a successful and ongoing working relationship with both of the above firms. We are currently executing two Tactical Vehicle Maintenance Facility projects for SWDIV NAVFAC at Camp Pendleton as a team.

One hundred percent of the work we intend to subcontract is to DBEs, 50% of which are also WBEs.

**H. PROJECT MANAGEMENT**

The DeMille project management plan is structured to be responsible and flexible to the needs of the project and also provide complete integration of the building and systems as the project develops from the programming phase to the design phase and on into construction.

Project Organization

DeMille's project organization places emphasis on the following key elements that are necessary for the successful execution of the project.

- Strong project management team
- Identification of the necessary design expertise for light industrial, tactical facilities and maintenance and repair facilities.
- Clearly defined programming and criteria development function
- Continuity of leadership from programming though final design and construction

**Project Management:** DeMille's Project Manager, Jacob Esterly, will serve as the focal point of responsibility for project performance and for all contractual interfaces between Corps of Engineers and DeMille. Mr. Esterly will be supported by DeMille's Project Principal, Arthur Carlson. As project principal, Mr. Carlson will be responsible for monitoring the progress of the project to ensure that it is delivered on time and meets the quality standards of both DeMille and the Corps.

The **Programming and Criteria Development Team** will be responsible for conducting programming interview with staff, collecting and organizing programming data, and generation of design criteria documentation which will be used as the baseline for the final design effort. The team includes Jordan Wentzel;



30. Use this space to provide any additional information or description of resources (including any computer design capabilities) supporting your firm's qualifications for the proposed project.

Tony Mazzola, Lead Programming and others as appropriate for the specific project needs.

The *Site Development Team* will be responsible for site analysis, planning, and design. The team will coordinate closely with the Programming and Criteria Development team to ensure integration of the building, site alteration, improvements, transportation/material handling, and surrounding landscape into a functional and esthetically pleasing facility. Site assessment relative to environmental and HazMat issues will be led by George Greystone. The site Development team includes subconsultants Tipton, Inc for geotechnical engineering and Border Surveying for surveying services.

The *Facility Design Team* will be responsible for final building and systems design and the production of working drawings and specifications. The multi-discipline team of highly experienced architects and engineers includes lead personnel for architectural, structural, mechanical/fire protection, electrical, interior design, and equipment integration and installation. This team will be responsible for production of the complete construction document package for the project.

DeMille Management and staff have evaluated the requirements and consider this contract an exciting challenge. DeMille offers significant advantages to the Corps of Engineers:

- An outstanding project team familiar with the elements required to design light Industrial and Maintenance Facilities.
- Immediate availability of experienced personnel who have successfully functioned as a team.

- The resources of a full-service firm, providing the Corps with increased efficiency and one source of accountability.

- A sincere desire to work with the Corps of the US Air Force.

We have the in-house resources to successfully execute this important assignment. DeMille is prepared to respond to the need of the Corps and is ready to mobilize immediately to meet the project's demand. We look forward to working with the Corps.

11. The foregoing is a statement of facts.

Signature:                     **ORIGINAL SIGNED**                    

Typed Name and Title: \_\_\_\_\_

Date:  
OCTOBER 20XX

